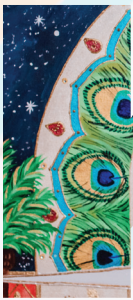






Kelly S. Jones and Her Spiritual Journey

BY ETHAN MAYS | PHOTOS BY KATIE RICHARD PHOTOGRAPHY



Kelly S. Jones is a transformational life coach that recently moved back to the Asheville area in September. She previously lived here for seven years and was drawn back after a time away. In classic Asheville fashion, she really enjoys the types of people that our lovely city attracts. She's also looking forward to warmer weather, when we can all go out, traverse the mountains, and soak in some rays. Though Kelly hasn't had much of an opportunity to get out in nature since returning, she has used her time here to begin building community through her work.

When asked where her journey in life coaching began, Kelly flashes a bright smile and looks up pensively. "I've always wanted to help people. I can remember that, as early as age 8, I wanted to be a therapist. I'm not sure that I even knew what therapists did at that point, but I knew that they helped people with their problems." When it came time to decide a major in college, though, Kelly ended up torn between psychology and business. She decided on getting a degree in the latter at Virginia Tech.

Corporate life came naturally to Kelly. She worked for ten years as a product manager at Safari Ltd., an educational toy company. When Kelly's father and grandmother passed away weeks apart, though, she decided that she wanted something more meaningful for herself. Naturally, she sought therapy. During a group session, she heard someone say the words "Feng Shui" from across the room. Immediately, she felt a pull to learn more about this and approached the person. Kelly learned more about Feng Shui and courageously chose to leave her corporate position to begin a pursuit of something deeper. The field of Feng Shui, spatial energy balancing, had a magnetic draw to her. She began exploring a world beyond what people usually see, and never stopped.

Kelly had success in self-employment, employing principles of Feng Shui for both businesses and homes. She even travelled to China to learn these principles from masters. During this trip, Kelly noticed a small gravesite off the side of the road that was constructed according to Feng Shui principles. "It was amazing to be able to see this gravesite that most people outside of the area would never have recognized and the respect given to this ancient science by the engineers of the paved roadways." The trip to China inspired her hunger for learning. It compelled her to keep

CONTINUED >>

delving more and more into fields that work with energy and spirit.

While delving, one of her Feng Shui students told her about the Akashic Records, where every action, thought, spoken word, and feeling of each person is captured in this ethereal field. It is similar to what some religious traditions call the "Book of Life." Her dive into Akashic Records started in 2001 and altered the course of Kelly's life and career yet again.

Kelly uses her training to help others access their subconscious and glean deeper insights about themselves - why they function the way that they do, what could be causing issues for them, what paths are in front of them, ways to heal unloving beliefs and trapped emotions and so many other things that are not readily apparent. Kelly has been working with people in this context for over two decades. She has also begun a group Akashic Records gathering in Asheville called "Akashville Café." At these gatherings (currently online meetings only), Kelly accesses peoples' Akashic Records to offer them insights and transformation. It is similar to the work she does in her life coaching practice but applied in a larger group setting.

Outside of Akashville Café, Kelly works one-on-one with clients and offers workshops. She currently holds 38 certifications in Akashic Records Readings, Feng Shui Consultation, Chinese Astrology and Reiki. She's able to synthesize what she has learned to teach others more



about themselves, find more clarity in their experiences and explore new ways of thinking that can benefit them. Additionally, Kelly uses her skills to create bright, geometric paintings that reflect spiritual points of perception. Each painting connects with a spiritual story that she has experienced in some fashion.

It is innately interesting to hear a neighbor's story, and Kelly S. Jones is no exception. Her journey to find herself, her purpose, and pass on her wisdom to others is something that we can all relate to. Part of Asheville's unique way of living is due to this nature of spirituality that our people hold. Kelly certainly holds this value and lives by Rumi's quote, "As you live deeper in the heart, the mirror gets clearer and cleaner." We could all benefit a little from taking a page out of Kelly's book, following our heart, and living our deeper truth in the love we share.